



Sadness

**Key Observations:** The facial expression of **sadness** is marked by **closed eyes**, which indicate a desire to withdraw from the environment. The **lowered brows** create a furrowed appearance, signaling emotional **distress**. Additionally, **the corners of the lips** are slightly **downturned**, reflecting a **lack of joy**, while **the upper lip remains still**, eliminating signs of **disgust**.

**Overall Emotional Interpretation:** These features collectively convey a profound sense of **sorrow and introspection**. The absence of surprise or disgust further solidifies the emotional state, suggesting that the individual is experiencing deep **sadness** rather than anger or fear.

**Conclusion:** In summary, the combination of closed eyes, furrowed brows, and downturned lips powerfully illustrates **sadness**. This expression encapsulates a retreat into one's own thoughts, highlighting the emotional weight being carried.



Fear

**Key Observations:** The facial expression of **fear** is characterized by **elevated eyelids**, which indicate heightened alertness and a readiness to respond to potential threats. The **upward movement of the eyebrows** further emphasizes this state of **vigilance**, while a **dropped jaw** suggests **shock or surprise**. Additionally, the **subtle elevation of the upper lip** and **the depression of the lower lip** contribute to the overall expression, reflecting **apprehension and distress**.

**Overall Emotional Interpretation:** Collectively, these facial movements convey a strong sense of **fear**, highlighting the individual's instinctual response to a perceived danger. The combination of these features underscores their emotional state of **alarm and vulnerability**.

**Conclusion:** In summary, the analyzed facial expression effectively communicates the essence of **fear**, illustrating the individual's readiness to react to threats and their emotional distress.



Anger

**Key Observations:** The facial expression indicative of **anger** features partially **closed eyes**, which suggest a narrowed gaze that heightens focus on perceived threats. The **eyebrows are significantly lowered**, creating a furrowed brow that conveys **frustration and aggression**. Additionally, the **lips show a slight upward pull**, accompanied by a pronounced **upper lip raise and lower lip depression**, signaling **contempt and displeasure**.

**Overall Emotional Interpretation:** These facial movements collectively express a strong emotional response characterized by **anger, frustration, and aggression**. The combination of narrowed eyes, lowered brows, and lip movements reinforces this **intense** emotional state.

**Conclusion:** In summary, the analyzed facial expression clearly communicates **anger** through its distinctive features, reflecting a readiness to confront or react to provocation.



Disgust

**Key Observations:** The facial expression features **partially closed eyes**, indicating a reaction to an **unpleasant stimulus**, while a **slight smile from lip corner elevation** suggests an internal conflict between disgust and a desire to mask the emotion. The **pronounced raising of the upper lip** and a **downward pull of the lower lip** further emphasize the **disgust** response.

**Overall Emotional Interpretation:** These facial movements collectively convey a strong sense of **aversion**. The combination of eye behavior, lip movements, and upper lip positioning clearly communicates a reaction to something **distasteful**, rather than amusement or happiness.

**Conclusion:** In summary, the analyzed facial expressions distinctly represent **disgust**. The interplay of eye closure, lip dynamics, and upper lip movement effectively illustrates a robust emotional response characterized by discomfort and rejection of an unpleasant stimulus.

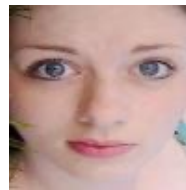


Surprise

**Key Observations:** The facial expression features moderately **elevated eyelids and eyebrows**, indicating **surprise or heightened interest**. The symmetrical positioning of these features enhances the perception of **astonishment**. Additionally, a **slight drop in the jaw** suggests a minor opening, which can accompany feelings of **shock or awe**.

**Overall Emotional Interpretation:** The combination of the elevated eyelids and eyebrows, along with the subtle jaw drop, creates a cohesive expression of **surprise**. This configuration effectively communicates a **strong emotional response to an unexpected** event.

**Conclusion:** In Summary, the observed facial movements collectively convey a clear expression of **surprise**, characterized by a balanced and coherent display of emotional engagement.



Neutral

**Key Observations:** The facial expression is predominantly **neutral**, characterized by **moderate elevation of both eyelids and eyebrows**. These movements suggest a degree of **alertness and curiosity**, but lack the intensity typically associated with stronger emotions.

**Overall Emotional Interpretation:** The eyelid and brow elevations indicate **mild interest or attentiveness** rather than surprise. The symmetry in these movements further emphasizes a **balanced** emotional state, suggesting a lack of tension or conflict.

**Conclusion:** In Summary, the expression reflects a calm and composed demeanor, with no significant emotional engagement. The mild activity of the eyelids and brows reinforces a **neutral** emotional state, indicating a tranquil and observant disposition.



Happiness

**Key Observations:** The facial expression features moderate **eye closure**, indicating a relaxed state often linked to **happiness**. The **brows are slightly lowered**, suggesting a lack of tension. The **jaw shows minimal movement**, indicating a **calm demeanor**, while the **mouth displays pronounced upward pulls at the corners**, characteristic of a smile.

**Overall Emotional Interpretation:** The combination of these features strongly conveys **happiness**. The **relaxed** eyes, neutral brows, and **joyful** mouth movements create an overall **positive emotional** context.

**Conclusion:** Overall, the facial expression is predominantly one of **happiness**, marked by a clear smile and relaxed features, with no signs of distress or surprise. This analysis confirms a strong expression of joy.



Contempt

**Key Observations:** The facial expression highlights several significant traits. The **eyes slightly lift the lids without full closure**, suggesting feelings tied to **contempt** rather than surprise or fear. The **eyebrows are notably lowered**, contributing to a **disapproving frown**, while the lips show a prominent **lift of the upper lip** and a **drop of the lower lip**, reinforcing the notion of **superiority**. Additionally, a **subtle side smile** infers **mockery**.

**Overall Emotional Interpretation:** These cues—lowered brows, raised upper lip, and a subtle nose wrinkle—align closely with **contempt**. The interplay of lip movements emphasizes **disdain** rather than positive emotions.

**Conclusion:** The distinct combination of a raised upper lip, frowning brows, and a nose wrinkle confirms **contempt** as the primary emotion, indicating a sense of superiority and disdain.